

Quimper Unitarian Universalist Fellowship



A Welcoming Congregation

February 2007

February Sunday Services

February 4, 9:15 & 11:15 A.M.

What on Earth Have I Done?

Guest Speaker: Rev. Robert Fulghum. Robert Fulghum has published seven best-selling books: *All I Really Need to Know I Learned in Kindergarten*, *It Was on Fire When I Lay Down on It*, *Uh-Oh, Maybe (Maybe Not)*, *From Beginning to End—The Rituals of Our Lives, True Love, and Words I Wish I Wrote*. There are currently more than 16 million copies of his books in print, published in 27 languages in 103 countries. He has performed in two television adaptations of his work for PBS, is a Grammy nominee for the spoken word award, and has been a nationally-syndicated newspaper columnist.

Born in 1937, Robert grew up in Waco, Texas, working in his youth as a ditch-digger, newspaper carrier, ranch hand, and singing cowboy. After college and a short career with IBM, he returned to graduate school to complete a degree in theology. For 22 years he served as a parish minister of Unitarian churches in the Pacific Northwest. During this same period he taught drawing, painting, and philosophy at the Lakeside School in Seattle. He also sings, plays the guitar and mando-cello, and was a founding member of the authors' collective rock-and-roll band, the Rock-Bottom Remainers. Currently, he lives in Seattle, Washington, and on the Greek island of Crete. For more information, see his website: robertfulghum.com.

February 11, 9:15 & 11:15 A.M.

Do You Believe in God?

Rev. Bode. Have you ever been asked this question? Have you asked this question of yourself? How have you answered others? How have you answered yourself? This sermon will take a look at different concepts of "God" – theistic, polytheistic, pantheistic, panentheistic, deistic, atheistic.

February 18, 9:15 & 11:15 A.M.

The End of Faith: One Reader's Response

Guest Speaker: Joseph Bednarik. Sam Harris's controversial bestseller, *The End of Faith*, discusses the struggle between reason and religion in the modern world. This sermon explores several aspects of the text, including the challenge of religious tolerance and the call to move beyond faith-based religion.

Joseph Bednarik has been a member of QUUF since 1999. He curates the annual "Favorite Poem Service," has taught in the Our Whole Lives (OWL) program, and currently serves on the Committee on Ministry.

February 25, 9:15 & 11:15 A.M.

The Golden World

Rev. Bode. My late winter/early spring sermon series this year will be the distillation of a number of themes from Robert A. Johnson, an author whose work I know well from both his books and personal conversation. I begin the series with his concept of the "Golden World."

The official event calendar is available on our
website: www.quuf.org.

The deadline for the March newsletter is
Thursday, February 22nd.

**Quimper Unitarian
Universalist Fellowship**
2333 San Juan Avenue
Port Townsend, Washington

Office Administrator:

Nancy Graham
Office Phone: 379-0609
Office Fax: 385-0086
Office E-mail: quuf@olympus.net
QUUF website: www.quuf.org

Office Hours: Closed Monday

Nancy: Tues. & Thurs. 10-5; Fri. 9-3

Minister

Rev. Bruce Bode
Office hrs: Tues-Thurs 9 am - 1 pm
Work: 379-0609
Email: bruce@olympus.net

Religious Education Director:

Kathy Stevenson
kstevenson@olympus.net

Choir Director

Marj Iuro
379-6623, mniuro@yahoo.com

QUUF Board of Trustees

Kendra Golden, *President*
379-6904, jim-kendra@bigfoot.com

Al Thompson, *Vice-President*
379-1696 auntjelly@cablespeed.com

Carolyn Latteier, *Secretary*
385-0058, latteier@olympus.com

Lynn Taylor, *Treasurer*
385-3666, lynntaylor@olympus.net

Helen Kolff
379-4858, helenk@olympus.net

David Alvarez
385-5854, alvarez@olympus.net

Joanna Sanders
379-8973, rutenbeck@waypt.com

Sheila Lauder
379-6434, onisland@mac.com

John Collins 379-3299,
collinsj37@cablespeed.com

Newsletter Editor:

Alice King, aking@olympus.net

Another Focus



I've only just arrived in the Anza Borrego Desert in southern California for a winter reading break and immediately I feel connected to a vastness beyond our human world and even the earth itself, as well as a sense of the limitation of our everyday space/time consciousness.

For the most part, the focus of my life (as I suspect with yours) is with our human world and this planet. This focus has to do with all the joys and sorrows, cares and concerns, dates and deadlines of being human upon the earth at this time in its unfolding. But here in the desert, whether surveying the distant Salton Sea from a mountain ledge, or looking up into the Milky Way splendor of the night sky, or zigzagging through the desert vegetation, the human world and even the earth itself slides away and I feel myself part of something more ancient and ongoing.

I love the human world. I love the earth and the things of the earth. But it's not my entire being or reality. I know I also belong to something more. And when the reality of this human world slips away, "I" remain part of this larger reality. Says the poet Robinson Jeffers:

What a pleasure to mix one's mind with geological
Time, or with astronomical relax it.

There is nothing like astronomy to pull the stuff out of man. His stupid dreams
and red-rooster importance: let him count the star-swirls.

(from "Star-Swirls," *The Beginning and the End*)

Additionally, in this desert setting, I become aware of the limitation of my own consciousness. I sense that the space/time lens of consciousness through which I normally relate to and construct reality is just that – a lens, a human imposition, just one way of approaching reality and not necessarily the only way. Certain religious teachers, particularly from the East, warn us that our ordinary way of perceiving reality is "illusion." I take this to mean, not that it's not real in its way, but that it's not absolute; it's relative to us.

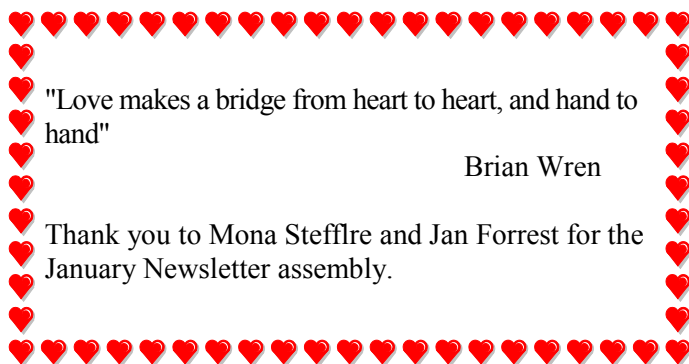
Thus, here in the desert I am reminded not to get too attached to my own life or to my own perceptions of reality. Paradoxically, however, experiencing such limitations feels like a release into a larger reality to which "I" eternally belong.

Bruce Bode
January 10, 2007

OTHER MEETINGS (irregular ones not listed)

Building & Grounds	2 nd Thurs.	4:30 p.m. R.E. 2
Membership / Hosp. Comm.	3 rd Thurs.	3:30-5:30 p.m. R.E. 2
C.Y.R.E.	2 nd Tues.	7-9 p.m. R.E. 3 & 5

Office Offerings



"Love makes a bridge from heart to heart, and hand to hand"

Brian Wren

Thank you to Mona Steffire and Jan Forrest for the January Newsletter assembly.

HELP US OBEY THE LAWS— Our Bylaws that is. Every five years the Bylaws Committee is tasked with reviewing and amending QUUF by-laws so that our practices are in sync with our regulations. If you have any suggestions to assist us in this process, please contact David Alvarez (360 385-5854 or alvarez@olympus.net) ASAP. After review by the Board (April 1, 2007), bylaw revisions will be presented for membership vote at the Annual Meeting.

From the Board

Financial Matters

Pledges-R-Us

You pledged generously at our commitment Sunday last March and QUUF based its budget on your pledge commitments. Thank you for your generous caring for our QUUF community. Unfortunately, some folks are lagging a bit in getting in their pledges and we currently have a pledge short fall of about \$5,700. If you are behind and are able to get up to date with pledges, please do so now. If things have changed for you and you are not able, please let treasurer Lynn Taylor know, so that we can adjust our budget.

Electronic Giving!

Would you find it helpful to have your offerings debited directly from your bank account as you do other monthly drafts? QUUF now offers Electronic Giving for those of you who wish to have your contributions transferred electronically to the church's account. If you travel, this is particularly helpful in keeping up with your intended offerings, and it will keep you from having to make up the difference later. Information and sign up forms are available in the church office. If you have any questions please contact Lynn Taylor at lynntaylor@olympus.net or 385-3666. Lynn can send you the sign-up form by email.

News from the Greening Kitchen

Green Sanctuary Committee appointed members Barb Boelling, Jeanette Richoux, and Donna Logan to the **Green Kitchen Subcommittee**. Please note our tasks posted on cupboard door.

Retiring winter volunteers: thank you, Deb Hammond, Kate Madson, and Kathy Stevenson. Welcome napkin volunteers for February - April in week 1-4 order: Barb Boelling, Donna Logan, Clara Klug, Karen Page.

Auction grows greener: Napkin care by Diane Haas, Dick and Esther Conway. Reusable wine glasses, plates and table cloths will be featured.

Dish cloths replaced kitchen sponges as recommended by the Jefferson County Health Department.

Christmas Dinner made greener with reusables washed and / or provided by Alan and Diana Johanson and Kate Dwer. Also, to the kitchen crew - thank you!

That Blue Basket - It's for paper, i.e. order of service insert, Choice Tea wrappers etc. NOT latte cups, food soiled or plastic lined paper. B & G does clear our recycle for acceptability before refusal by collector.

A green kitchen is a gift to the planet, Kitchen Witch

Music Notes



Note on your calendar that on April 14 the Music Program will present a Coffee House evening themed "Winter to Spring".

If you would like to participate in this event with appropriate music or readings, please contact Marj at mnuro@yahoo.com.

Marcia Lewton

Sanctuary Flowers

Thank you for featuring lovely feathers, branches, and plants.

Nan Toby Tyrrell

Jeanette Richoux

Donna Logan

Sincerely,

Sunday Services Committee

Please contact Donna when you have a plant or other lovelies to share.

385-0164 drlogan@olypen.com

Children & Youth Religious Education

DRE Kathy Stevenson kstevenson@olympus.net

CYRE Calendar

Every Sunday: RE at 9:15 and 11:15 YRUU 6:00-8:00 (High School Youth)	
Feb 4	Newcomer Orientation
Feb 2,9,23	5th/6th OWL, 4:00
Feb 4,11,25	Chalice Journey, 5:30
Feb 10	QUUF Media Sale
Feb 12-19	Bay St Louis Trip
Feb 16-18	Annual General Meeting, Boise ID
Mar 4	CYRE Committee hosts Teacher Appreciation High Tea
Mar 23	RE Spring Fling

Not a Member?

Whether you are new to QUUF, or have been coming for a long time, you always have an open invitation to our Newcomer Orientation. The winter class is perfect for families who have difficulties getting out for evening meetings. We have childcare and lunch is provided. Even if you have been coming as non-members for a while, I believe you will enjoy this class led by Bruce Bode and Barb Dyer. Call or email Barb to sign up. 379-0353 or dyer@olympus.net. Membership is needed to cast a ballot on upcoming building proposals.

Bay Saint Louis:

Thank you to all who supported our youth and young adults in their desire to help with home reconstruction in Bay St Louis, Mississippi. And to those heading out on this trip, our best wishes for a meaningful experience go with you.

Special Program - Our Whole Lives (OWL)

We are in our 5th year of offering OWL to 5th/6th graders. We have 13 enrolled for 9 Friday afternoons. They are led by experienced facilitators Deborah Carroll and George Gerczak. How would our own lives have been different if we had been offered comprehensive sexuality education?

Special Program - Chalice Journey

Fourteen 3rd/4th graders have joined the adventure of Chalice Journey. With the metaphor of travel, we are

exploring UU history, principles, sources and ourselves. We made passports the first night, had a scavenger hunt in our buildings and learned the UU Chalice Handshake. Thank you to Karmen Meier for stepping back into a leadership role at QUUF.

Special Program - UU Drug Education

Eleven youth have completed a UU Pilot Project named Freedom and Responsibility. We congratulate them for hanging in with us while we help the developers fine-tune the program. The philosophy of the program is: Just Say Know. Our facilitators, Melissa Layer, Dana Nelson and John Collins did an excellent job working with an imperfect program. I believe the work of the youth and adults will benefit future UUs when the curriculum is ready for publication.

QUUF Events

BOOK/MEDIA SALE

Saturday, February 10, is the date of the QUUF used book sale. This is a good fund raiser for the fellowship. Please bring books, DVDs, and videos to QUUF Wednesday through Friday mornings of that week. Call Rod Mitchell, 385-3277, or Barb Dyer, 379-0353, for pick-ups or information. Please, no old textbooks or computer manuals. If you are willing to help with the sale call Barb or sign up on the clipboard at QUUF.

First Sunday Goodies!

We need more people who are willing and able to bring small snacks for the tea/coffee time on the first Sunday of each month. Ideally, one person should volunteer each service and bring the goodies when they come to church. The coffee people put them out. Cookies, grapes, anything small and easy to eat.

The sign up sheet is attached to the 'fridge in the kitchen. Please check it out and see if you can take one of the empty Sundays.

February 3 Orientation

There may still be time for interested persons to register for the one-day Orientation on Saturday, February 3. It begins at 9:30. Lunch will be served and child care is available. This is an opportunity to get information about this fellowship and Unitarian Universalism in a small, informal setting. Attending an orientation is encouraged for anyone considering membership. Call the office, 379-0609 or Barb Dyer, 379-0353.

Growth News

Please mark your calendars now for the next congregational discussion of our building plans at **12:30 on February 4** to discuss decisions to be made for the Phase I design.

During the next three months the Building Steering Committee and Building Design Committee will prepare the Program Document, to be voted on in April, which will outline the master plan for all building phases and the design specifications for Phase I.

Nine task forces reported in open sessions on December 18 and January 8. Their reports, in prioritized detail, are available at the QUUF website under Growth News.

The Capital Campaign is now complete. 140 households (80%+) have made pledges for the new building, with \$200,000 already in and the rest to be paid over a 3 year period.

Resources for Phase I include \$700,000 in pledges and early building fund contributions, an anticipated \$400,000 mortgage, and an estimated \$150,000 of volunteer labor, for a total of \$1,250,000.

We estimate those funds will give us about 5,000 sq ft of new construction; the current building has about 4,100 sq ft of space. If we use funds to reconfigure current space to make more effective use of it, then the new space may be smaller.

Current hard cost estimates are based on about \$175/sq ft, an amount that will vary depending on materials used, construction methods, finish, and changes in the cost of materials over the next year. In addition, soft costs for design work, furnishings, land, and permitting are estimated to run 30% of hard costs, and the contingency reserve an additional 10%.

To build everything we want, including a new sanctuary and entrance foyer, institutional kitchen, RE and adult meeting spaces, a library, music room, and offices, will cost more than we can afford at this time. Thus we must plan for what we want in the completed campus in the future while we also decide what we can afford in Phase I. Later phases are probably at least 8-10 years down the road and will require a new capital campaign.

Guiding assumptions so far include:

- A new sanctuary with about 180-250 seat capacity in Phase I.
- We will also be able to meet a substantial number, but

not all, of the other needs identified in the task force reports.

- The sanctuary will have a flat floor, with moveable seats.
- Size/cost constraints require that we continue to have two Sunday morning services.
- To build as green as we can afford is important, and the additional costs must be part of our budget.

We as a congregation must decide how large a structure we should build at this time, taking into account such questions as:

- Build it large now, use only part of it for a sanctuary, and use the rest for other purposes until our attendance requires the full space, or
- Build it smaller now, then add on as increased attendance requires.
- Build it small and use the cost saving to build to meet other needs permanently.
- Just how big do we want QUUF to get – in membership and in footprint?

Our time schedule, also available at our website under Growth News, looks like this:

- February 4: 12:30 - congregational discussion regarding key issues.
- Week of February 14: circulate a draft of the Program Document for comment.
- March 1: send a draft Program Document to the Board to review at their March meeting.
- March 18: 12:30 - congregational discussion of the draft Program Document.
- April 1: 12:30 - another congregational discussion session.
- April 8: Congregational Meeting to vote on Program Document. At that point, our architect will commence design work, and working with our contractor he will be able to give us a fairly accurate cost estimate.
- Fall: Congregational Meeting to vote on the completed design, and also vote on taking out a mortgage. Detailed designs and permitting can then be done, leading to groundbreaking some time in early 2008.

This schedule may be extended if there is need for additional time to research the issues or to come together on an agreed-upon design.

Countless hours of labor and much talent, research and educated thinking have gone into this work by the Capital Campaign Committee, the Building Steering and Design Committees, and the 80 or so members of the task forces involved. Thanks to all.

Marcia Lewton

Adult Learning Programs (ALPs)

WINTER –SPRING 2007

SPECIAL EVENTS:

Katrina and the Gulf Coast: Nature, Science and Public Policy. Robert S. Young, Ph.D.

Sunday, February 11, 3:00 - 5:00 PM, (Admission Free)

A talk (with visuals) by coastal geologist, Robert S. Young, author of a recent NY Times article highly critical of the Army Corps of Engineers plans to re-engineer the Gulf Coast. One of the plans relates directly to Bay St. Louis, Port Townsend's sister city. Young is a nationally known hurricane impact researcher and is associate professor of Geosciences at Western Carolina University. He was among the first scientists to survey the Gulf Coast after Hurricane Katrina, and over the years he has conducted research on behalf of the Federal Emergency Management Agency and the National Science Foundation. Young also is director of the Program for the Study of Developed Shorelines, an internationally prominent program known for the integration of coastal science and management. Co-sponsors: QUUF (Adult Ed and Social Justice) & the Port Townsend Marine Science Center.

Poetry Reading -- Charles Goodrich returns to QUUF (he was the Visiting Lecturer in Dec. 2005) with fellow Oregon poet **Clemens Starck**, on **Friday, March 9th, 7:00 PM.** Don't miss this exciting evening of poetry by two of Oregon's finest poets. (Admission Free)

CLASSES (beginning in Feb.):

THE POETRY OF EMILY DICKINSON: Feb. 2 - Mar. 30, except 2/16, eight Fridays, 10 AM-12 N, >OR< **<CHANGED DATES:> Jan. 30 - Mar. 27**, except 2/20, eight Tuesdays, 7-9 PM, Bruce Bode, facilitator. Here's an opportunity in a small group setting to take in the thoughts of one of America's greatest poets - some say, the greatest. Emily Dickinson visits interior places like no one else. Her poems, so very condensed in form, are often tough nuts to crack. The small fruits, once harvested, however, are extremely nourishing. And it helps to have a group of gleaners, chiselers, and borers -that's what we do in our classes. Please don't be put off from this class with thoughts of inadequate poetic background, etc. If you have ever been attracted by a Dickinson poem, then this is a class for you. The book

we will use is a recently prepared one-volume edition of Dickinson's complete poems titled, *The Poems of Emily Dickinson*, Reading Edition, edited by Ralph W. Franklin (paperback published by the Belknap Press of Harvard University Press - \$16.95). Franklin is the current foremost scholar of Dickinson's manuscripts. His work updates the fine earlier work of Thomas A. Johnson, the scholar who, finally, 70 years after the poet's death in 1886, gave us Dickinson's poems in the form in which she wrote them. If you wish to order a copy of this book, please indicate such on the sign-up sheet. Questions? E-mail at bruce@olympus.net or call the church office, 379-0709.

INTENTIONAL COMMUNITIES, Condos, CoHousing, EcoVillages and Communes: <CHANGED

DATES:> Feb. 6 & 20 , two Tuesdays biweekly, 7-9 PM, Kees Kolff, facilitator. "Do you share?" asked my niece when her grandfather received a large chocolate Easter bunny. Perhaps you have shared a home with a partner and your children, or a lawn mower with a neighbor. Or perhaps you have shared a house, a car, a boat, a cabin or a condo with another family? Did it work well or was it a disaster? Let's examine why sharing did or did not work. Learn about intentional communities, from those that share very little to those that share everything including personal income. How are they structured to facilitate sharing? We'll discuss why sharing will become increasingly important if we are to thrive as a just and sustainable community now that the "inconvenient truth" of global climate change is undeniable. We'll explore together ways in which each of us will be able to share more of the precious resources of this small planet so we can leave the Earth a better place for future generations. Questions? You can reach Kees Kolff at 379-4858.

A SEMINAR ON HOW THE BRAIN-MIND

WORKS: Feb. 8 - Mar. 15, six Thursdays, 3-5 PM. "An amateur athlete lost his arm in a motorcycle accident but continues to feel a 'phantom arm' with vivid sensations of movement." A man who suffered a head injury "claimed that his father and mother had been replaced by duplicates who looked exactly like his real parents." These and other unusual neurological cases challenge our common understandings of the brain-mind; they are taken from the book, *Phantoms In The Brain*, by V. S. Ramachandran, (a neuroscientist at U.Calif., San Diego), the basis of this seminar. This book is very readable; it can be ordered at Imprint, etc. We will read and discuss two chapters each week. Clinical Psychologist Jim Oakland is the leader. For more information, call Jim at 379-6561. Class maximum: 20; minimum: 8.

AT THE ROOT OF THIS LONGING, Reconciling a Spiritual Hunger and a Feminist Thirst: three Thursdays, **Feb. 8 - 22**, 7-9 PM, >OR< three Fridays, **Feb 9 - 23**, 9-11 AM, Robin Stemen, facilitator. This class is a three-session discussion of the book: *At the Root of This Longing: Reconciling a Spiritual Hunger and a Feminist Thirst*, by Carol Lee Flinders. "Can you be a feminist and lead a spiritually fulfilling life in today's world? Carol Lee Flinders answers this question and unveils her discovery that a life of meaning, self-knowledge, and freedom absolutely depends on the full realization that feminism and spirituality are more than just compatible---they are mutually necessary. "Please read this book before the first discussion and note a few topics you'd like to discuss. The group will be limited to eight, so be sure to sign up as soon as you can. Robin Stemen can be reached at 385-5854 or robin@olympus.net

AND TWO NEW ADDITIONS (beginning in March):

GLOBAL WARMING: CHANGING COURSE (A new Northwest Earth Institute course.) Four Thursdays, **March 29 - April 19**, 7 - 9 PM. This course offers opportunities to learn more about the history and science of global warming, explore personal values and habits as they relate to climate change and consider actions to curb global warming. For more information contact Helen Kolff at helenk@olympus.net or 379-4858.

"GREAT TURNING" SEMINAR, Bob Schultz, facilitator. Nine Thursdays, **March 1 to April 26**, 3-5 PM. This is a repeat of the successful seminar last fall on *The Great Turning: From Empire to Earth Community?* by Bainbridge author David Korten. Korten considers the sobering prospect that humankind is now facing a great unraveling of the fabric of life as we've known it on planet Earth. To avoid the potentially tragic consequences of peak oil, global warming, destructive militarism, and other forces pressing in on us, he argues that we must forsake dominating hierarchies in favor of "earth community"--localized, feminized, bottom-up, earth-friendly relationships, with new stories and a new spiritual orientation. The group will discuss 2 or 3 of Korten's chapters each Thursday. Topics will include urgent global imperatives, religion & science, female/male religion, U.S. history and current politics, giving up old stories for new ones, hopeful movements. Some guest discussants will be invited. For an overview of Korten's book, visit www.greatturning.org and click on the title, or get a copy of the summer 2006 Yes!Magazine. To register, please contact Nancy in the

QUUF office, at quuf@olympus.net, or 379-0609. Questions may be directed to seminar leader Bob Schultz at rschultz@olympus.net or 379-3397.

BOOK DISCUSSION GROUPS:

SCIENCE AND RELIGION Discussion Group, meets monthly. The next meeting is **Sunday, Feb 4, 7:00 PM**, QUUF sanctuary. We will continue discussion of the book *Breaking the Spell* by Daniel Dennett. Marilyn Mitchell will moderate the discussion of the final part of the book, "Religion Today." Anyone interested in this topic is welcome to attend.

QUUF BOOK CLUB meets monthly. The next meeting is **Sunday Feb 11, 7:00 PM** at Discovery View Apartments Lounge, 1051 Hancock Street. We will be discussing *The Handmaid's Tale* by Margaret Atwood. Everyone is welcome. Information: Marilyn Muller, coordinator, 379-9553, mmuller@cablespeed.com.

EARLY BIRD SUNDAY BOOK DISCUSSION, meets every **Sunday, 7:50-8:50 AM**, RE 2, Bruce Bode, facilitator. Contact Rev. Bode at bruce@olympus.net or Elaine Nelson, 379-9949, elaine@zynrgy.com for information. The current book for discussion is *The End of Faith* by Sam Harris.

OTHER ACTIVITIES:

MEDITATION: Mondays, 7-8:30 PM. An ongoing meditation group meeting at the home of Clara Klug, 5515 Hendricks. Meditation for 45 minutes, then selected readings and discussion. Call Clara at 385-1084 for current information.

KNITTING: Tuesdays, 3-5 PM. Conversation, friendship, advice on knitting projects. Beginners welcome! Contact Nancy Shipley, 385-9024 or Jackie Barr, 385-3657.

THURSDAY BREAKFAST CLUB: Thursdays, 8:30 AM. Enjoy breakfast, support and friendship. Call Nancy Shipley, 385-9024 or Lars Watson, 385-5577.

CONTRACT BRIDGE: Call Barbara Jensen, 379-0556 for information.

WOMEN'S SUPPORT GROUPS: Confidential peer support groups for women. For information call Lee Faulkner, 379-3612.

Church Hosting For the Homeless

This project was given wings by COAST (Community Outreach And Shelter Team) and they are now supported and serviced by Church Communities and Oly-Cap in a mission “dedicated to providing shelter and food in a safe and warm environment.”

Last year the program ran for one month with each of seven Churches providing shelter and food for one week. This year it's a three-month program that began in December with the American Legion providing the shelter and the churches food and services for two weeks each.

During the two QUUF weeks, sixty-five volunteers from the Fellowship prepared and served three meals a day and acted as night monitors so the shelter could provide a good night's rest in a warm, safe place. They also helped clean and shop, provided clothing and bedding and many more much needed items. The Social Action & Education Committee estimates fifty volunteer hours a day for over fourteen plus days. That equals 700 + hours. QUUF also made a cash contribution to COAST for the shelter in addition to food and clothing.

Thank you to the wonderful volunteers, who, despite being stretched a bit thin, represented QUUF with compassion, dedication and really good food. Special thanks to Joyce O'Neal. As a member of COAST as well as QUUF, Joyce was a vital link and devoted herself tirelessly to this program and its beneficiaries. Thanks too, to our Social Action and Education Committee for organizing the QUUF commitment to this important and sometimes difficult project. Church Hosting for the Homeless is a recurring and important piece of our social action outreach program.

To every one who gave generously to the program, thank you. This is a particularly frigid winter to be without shelter and you made a difference.

See related article by Kees Kolff page 9

THE UUA GENERAL ASSEMBLY COMES TO OUR DISTRICT this year and with it the opportunity for more of us than ever to join as many as 5000 UUs in celebration of our community. GA will be in Portland at the Convention Center from, June 21-24. If you volunteer to work for 24 hours, or 16 in the children's program, you will receive free registration. Volunteer applications will be available by March 1st and must be sent to Rosie Hamilton (rosiephilh@msn.com), in Portland, between March 1-31.

Designated Offerings

On February 11 our offering will be given to the Jefferson County affiliate of NAMI (National Alliance on Mental Health). Formed two years ago by Judy Tough and Sheila Lauder, it provides support, education and advocacy for those with a mental illness and their families and friends and reaches out into our community to educate the general public.

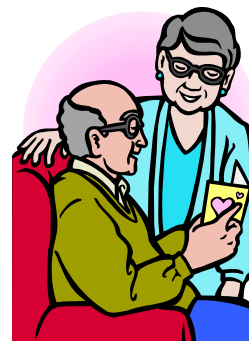
On February 25 we will provide a donation to the Youth Arts Council. Among other things, this group sponsors the Children Arts Festival in March and the Kaleidoscope Summer Arts program. There are also volunteer opportunities for those interested.

Members of the Designated Offering Committee are Pam Daly, Don Berg, Sue Estes, Jan Forrest, Gayle Kaune, Rod Mitchell, and Bruce Bode, staff liaison. They welcome and encourage your suggestions of organizations to whom to designate these twice-monthly offerings.

Giving To QUUF Through Life-Income Plans

Would you like to make of gift a cash or securities to QUUF and keep earning income? The UUA offers free planning services that can help you make a "life-income" gift to help support our fellowship.

Life-income gifts are rewarding and simple to arrange. You make an irrevocable contribution of cash or securities and may claim a one-time charitable tax deduction. You will receive quarterly payments for the rest of your life -- guaranteed. Payments may be fixed or variable. When you die, your gift is distributed to the beneficiaries you've designed -- our congregation, the UUA, or a combination. It's entirely up to you.



Life income gifts are a wonderful way to give generously and receive some terrific benefits. To learn more about the various kinds of planned gifts, visit the UUA website at <http://www.uua.org/giving/giftplans/index.html>, and discuss these options with your financial advisor. If you need help accessing information, or are ready to make a gift, please contact Betty Oppenheimer, Chair of QUUF's Special Funds Committee (ravensbop@olympus.net or 360 683-3441).



**Save the Date for
The 2007 Mythic Stewardship Dinner
Friday evening, March 23, 2007
Erickson Building, Jefferson County
Fairgrounds
(details will follow in early March)**

Building Momentum – The 2007 Stewardship Campaign

momentum \ mō-‘ment-əm: *a property of a moving body that determines the length of time required to bring it to rest when under the action of a constant force of motion..*

Given the constant force of QUUF’s forward motion, we have to wait a while before our collectively moving body gets to rest. We are still Building Momentum!

These are exciting times, and as we plan for the future, we must sustain our sacred space in the present.

Like clockwork, it’s time again for our Stewardship Campaign to fund QUUF’s Operating Budget for the July 2007-June 2008 Church Year - the time of year when each member and friend of QUUF is asked for his or her annual pledge of financial support for our beloved church home, our community.

Our generosity has been tested this year, hasn’t it? We’ve stepped up and generously contributed to the Capital Campaign for our building expansion, and we’ve been moved to give liberally to the new, bi-weekly collections for outreach to the local community.

We also have to hold our own, maintaining our momentum through this exciting journey of expansion.

The past few years of successful stewardship campaigns have allowed us to put our house in order and bring our staff up to UUA fair compensation standards, freeing us to begin visioning and fundraising for building expansion, and to give away half of our plate collections for outreach.

As part of our Long Range Plan, a 5-year budget projection was created, based on realistic, but small increases to our budget throughout the building design-and-build project. It shows that an increase in pledge income from 205K to 222K for next year will allow us to handle cost of living increases for our staff, increases in costs (insurance, utilities, etc.) and an incremental increase in the new line item (created last year) to cover payments on our eventual mortgage.

We urge everyone to give as generously as possible, using the information we’ll be providing in March to ascertain the ideal pledge level for your particular circumstances.

As we’ve done in recent years, we’ll begin the formal campaign with a fun evening of food and folly, with theme tables chosen by each host. This year’s theme is “Myths, Fairy Tales and Fables.” If you’d like to be a table host, please contact LaVaughn Snel at lsnel@olympus.net or 360-379-1474. Don’t miss an evening of culture as we present another thought-provoking piece of Unitarian theater starring our very own QUUF Players!

This year we will conclude the campaign with a rousing Commitment Sunday on March 25 where you will make your pledge, renew your membership, and further build the momentum of this community as it continues to grow in size, in spirit and in generosity.

~ The 2007 Stewardship Committee

A Night in The Homeless Shelter

By Kees Kolff

It was a cold night in December and this was my first experience as night monitor in the Port Townsend temporary homeless shelter.

At 9:30PM, after lights were out and everyone was asleep, the police arrived at the shelter and asked if we could take in one more person. My first response was, "Well, we really prefer to have them register by 5PM". Then when he explained that this young man had made his way to the hospital looking for shelter, having just been released that very morning from prison, my next thought was, "Do I really want to have some criminal here all night?" He had apparently missed a bus connection on his way home and had been walking for almost 3 hours. With some trepidation I agreed to do the intake, and when a young black man walked through the door, I was surprised to feel my apprehension increase. I have had quite a bit of cross-cultural experience and training in diversity and thought I was less prejudiced than that. In order to protect his identity I will call him Abel.

Abel turned out to be a delightful, polite, respectful, friendly, appreciative, and gentle soul, who has 8 siblings and is one of a set of identical triplets. He had worked for 6 years in a candy store in his home town and was doing fine until one of his look-alike brothers got into a fight over an underpayment on a drug sale. Abel was identified by sight and pulled off the bus he was riding home from work. "So you went to prison for a crime committed by your brother?" I asked incredulously. "Yes," he said, "And you would have too. My brother had a record and would have gotten 7 years. I only had to serve 17 months."

The next time we open a temporary homeless shelter here in town, I hope I will once again have an opportunity for a little community service and a lot of personal insight.

QUUF Newsletter
2333 San Juan Avenue
Port Townsend, Washington 98368

Jeanette Richoux has become active on clean air issues and works with the Health and Wellness Division of Local 20/20. On February 14, she and other environmentalists will be lobbying for "Priorities for a Healthy Washington" in Olympia. UU Voices for Justice will also be there from this region. For more information please contact Dave Ditzler from the Social action and education Committee or Jeanette.

First Class Mail

Get Your Newsletter by email

The QUUF newsletter is an emailed pdf file. To be added to the newsletter e-distribution list, email the QUUF office at: quuf@olympus.net. You can also download a copy from our website at www.quuf.org.

The QUUF Newsletter is mailed or e-mailed free to members.
The subscription rate for non-members is \$25 per year.

My vision of QUUF in 2016
By Beth Wilmart, January, 2007

Sunday morning the sun rises on a cool clear day in Port Townsend. I bundle up against the winter breeze, and head over the hill to church. My 11 year old daughter and 14 year old son are with me. Athena tells us excitedly about the latest RE project her class is working on. "What do you think God means, mom?" Sam is looking forward to attending Con in a few weeks with several of his friends. He met some great UU kids his age at the last one and wants to reconnect with them.

As we walk down San Juan Avenue, I see cars, bicycles and pedestrians approaching the QUUF campus. Young and old pour into the foyer to greet each other before heading into the solitude of the sanctuary. The kids check in with Kathy Stevenson and the RE teachers, then join me as we enter the sanctuary. It has a soft feeling about it, warm and sacred. It smells like fresh wood and pine. People are taking their seats quietly, only whispering if they need to communicate. We find our place and sit down.

A gong rings, bringing us to our center and focused on the service. As we speak the words and sing the songs so familiar to us, I am struck by how true they are even now. Twelve years ago, when I joined QUUF, I felt a connection to the place and people that has not wavered. We have struggled through building a new sanctuary, new RE space, adding staff, and clarifying our purpose with each other and the community.

I participate when I can in ALPs (Adult Learning Programs) programs, service opportunities, and committees. But for me, the essence of QUUF is these moments on Sunday morning, when I replenish my spirit through worship, tradition, and fellowship.

Invitation to the Congregation

Please consider writing up your vision for the future of QUUF. We all imagine the future a little differently, and everybody's addition helps spark the common vision that creates our future. Send your vision story (about 250 words) to Board Secretary Carolyn Latteier at: latteier@olympus.net.